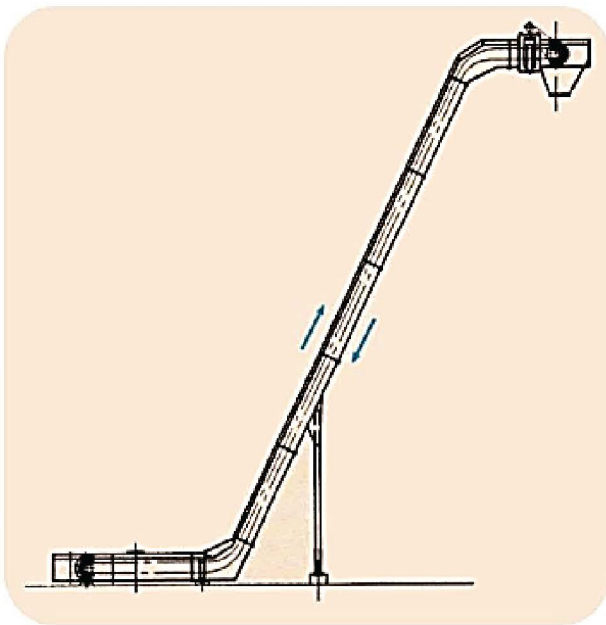




SKS



- Conveyor System
- Conveyor Chain
- Conveyor Shackle
- Conveyor Bolt&Nut
- Conveyor Coupling
- Conveyor Scraper
- Conveyor Sprocket Wheel

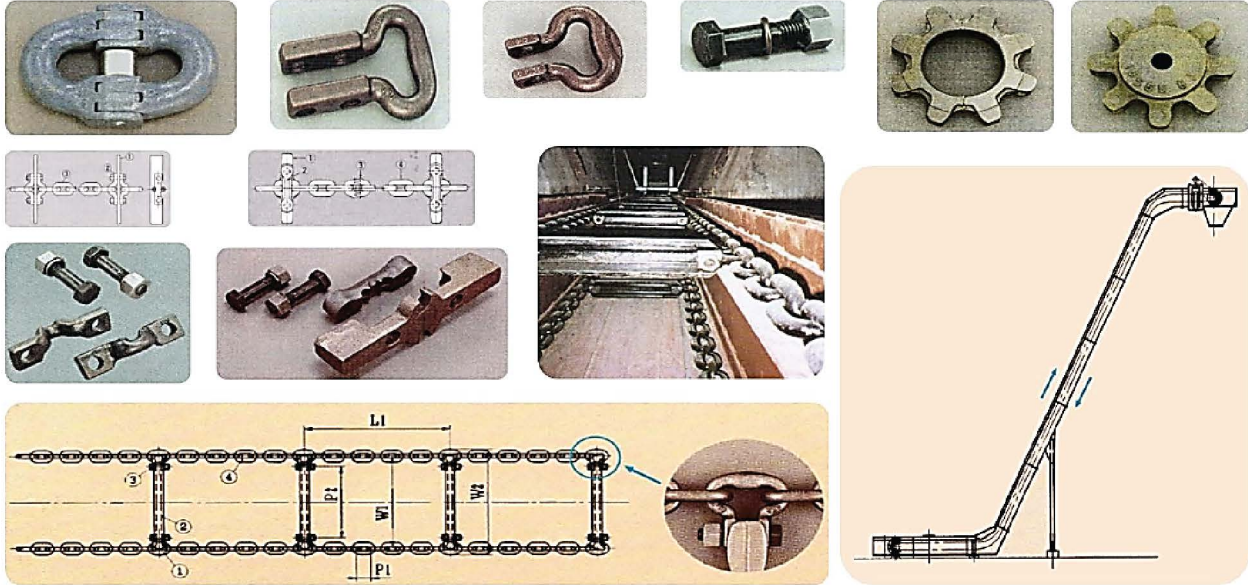
Scan to download
E-Catalog



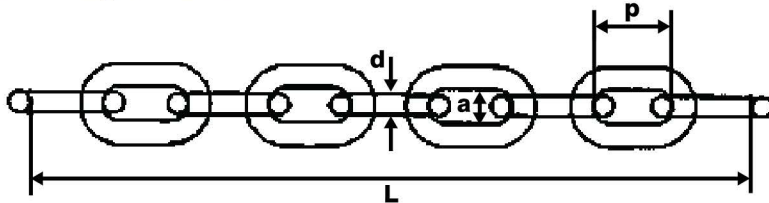


Conveyor System and Parts System & Chain

Conveyor System



Conveyor Chain



Type of Conveyor Chain

- H-C : Standard-strength
- SR-D : High-strength, Wear-resistant
- SR-WH : High Wear-resistant
[Surface Hardness - HV 600 (min)]
- SR-U630: Corrosion-resistant
[SUS 630 / Use below 400°C]
- SR-SUZ : Corrosion-resistant, Wear-resistant

Model	Dimension (mm)				Std. Length (L)		H-C		SR-D		SR-WH		SR-U630		SR-SUZ		Unit Weight (kg/m)
	d	p	a(min)	b(max)	No. of Links	Length (mm)	T.L. (kN)	B.L. (kN)	T.L. (kN)	B.L. (kN)	T.L. (kN)	B.L. (kN)	T.L. (kN)	B.L. (kN)	T.L. (kN)	B.L. (kN)	
1143	11±0.4	43±0.4	12.5	36.5	13	559 ^{+1.9} _{-1.3}	100	150	-	-	-	-	-	-	-	-	2.34
1450	14±0.5	50±0.5	17.0	48.0	15	750 ^{+2.4} _{-1.6}	160	250	160	300	70	150	-	-	80	160	3.95
1655	16±0.5	55±0.5	18.5	52.0	15	825 ^{+2.7} _{-1.8}	210	320	210	400	100	200	210	300	100	200	5.21
1864	18±0.5	64±0.6	21.0	61.0	15	960 ^{+3.2} _{-2.1}	270	410	270	510	160	330	-	-	-	-	6.93
1964	19±0.5	64±0.6	21.0	63.0	15	960 ^{+3.2} _{-2.1}	300	450	300	570	170	350	300	420	140	280	7.36
2064	20±0.6	64±0.6	23.0	67.0	15	960 ^{+3.2} _{-2.1}	330	500	330	630	200	400	-	-	-	-	8.37
2272	22±0.7	72±0.7	26.0	75.0	13	936 ^{+3.2} _{-2.1}	400	610	400	760	-	-	-	-	-	-	10.1
2280	22±0.7	80±0.7	26.0	75.0	11	880 ^{+3.2} _{-2.1}	400	610	400	760	240	480	400	570	190	380	9.65
2286	22±0.7	86±0.8	26.0	75.0	11	946 ^{+3.5} _{-2.3}	400	610	400	760	-	-	-	-	-	-	9.40
2586	25±0.8	86±0.9	27.0	81.0	11	946 ^{+3.5} _{-2.3}	480	720	-	-	-	-	-	-	-	-	11.5
2590	25±0.8	90±0.9	30.0	82.0	11	990 ^{+3.6} _{-2.4}	520	780	520	960	310	620	-	-	240	480	12.5
30108	30±0.9	108±1.0	34.0	97.0	11	1,188 ^{+4.4} _{-2.9}	750	1,130	750	1,270	440	880	-	-	-	-	17.9

* We can produce for other size and other material upon request.

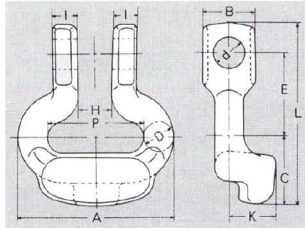
* T.L. = Test Load (ton)

* B.L. = Breaking Load (ton)

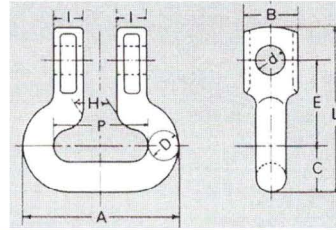
Conveyor Parts Shackle



Conveyor Shackle - C Type



Conveyor Shackle - CA Type

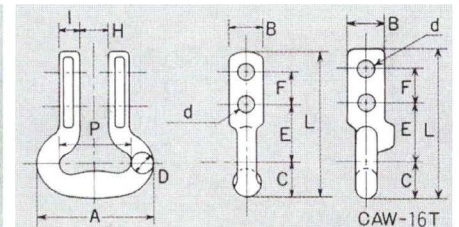


Model	Dimension (mm)												B.L. (kN)	Applicable with			Net Weight (kg)
	D	P	A	B	C	E	H	I	K	L	d	Chain		Scraper	Bolt		
C Type	C-1143	12	43	67	28	27.5	37.5	14	11	20	80	15	120	1143	Made to Order	B-14	0.3
	C1450SR	15	50	80	30	29	42.5	16	13.5	23	94.5	15	150	1450	S14-26	B-14	0.5
	C1655SR	16	54.5	86	30	32	46	18	13	25	94	18	220	1655	S16-27	B-16W	0.6
	C-1864	20	63.5	103.5	43	44	55	21	18	29.5	120	21	380	1864	Made to Order	B-20	1.2
	C6-18 (1964)	20	63	103	35	47	55	20	18	31	122	21	380	1964	Made to Order	B-20	1.1
	C-2590	26	90	142	50	60	75	28	22	41	163	27	650	-	-	-	2.6
CA Type	CA-14	14	50	78	28	23	35	18	11.5	-	72	14	150	1450	S14-26	B-14	0.3
	CAS-14	14.5	50	79	28	23	42.5	18	11.5	-	79.5	14	150	1450	S14-26	B-14	0.32
	CA-16SR	16	55	87	30	29	46	18	13	-	91	18	200	1655	S16-27	B-16W	0.43
	CA-19SR	19	64	102	43	33	55	22	18	-	109	21	320	1864 1964	S18-39	B-20	0.85

* We can produce for other size and other material upon request.

* B.L. = Breaking Load (ton)

Conveyor Shackle - CAW Type



Model	Dimension (mm)											B.L. (kN)	Applicable with		Net Weight (kg)
	D	P	A	B	C	E	F	H	I	L	d		Chain	Bolt	
CAW-14	14	50	78	24	23	40	25	18	11.5	103	12	150	1450	M10x55	0.33
CAW-16 FN	16	55	87	30	26	46	35	17	15	122	17	200	1655	B-16W	0.54
CAW-16 T	16	55	87	35	26	45	35	18	16.5	121	18	250	1655	B-16W	0.70
CAW-19 FT	19	64	102	42	31	55	50	20	19	156	21	300	1864 1964	B-20	1.06
CAW-2280	23	80	126	42	38.5	65	45	25	21	173.5	22	500	2280	B-2094-1	1.80
CAW-2692	27	92	146	52	45	91	65	29	26	230	29	550	2692	M27x120	3.50
CAW-30108	31	108	170	58	51	90	65	34	28	238	32	750	30108	B-30-2	4.20

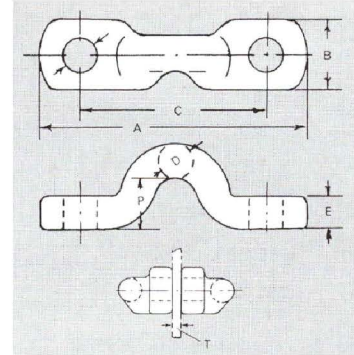
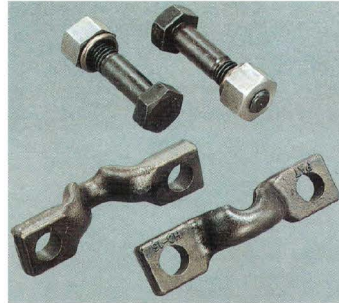
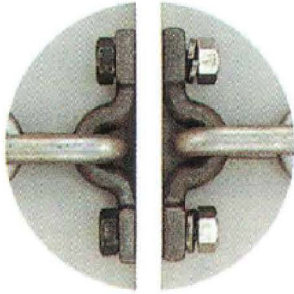
* We can produce for other size and other material upon request.

* B.L. = Breaking Load (ton)



Conveyor Parts Shackle & Bolt&Nut & Coupling

Conveyor Shackle - HC Type (Chain can be replaced partly easily)



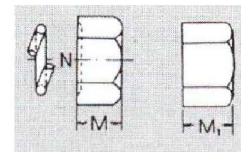
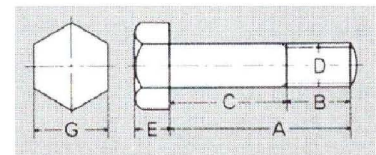
Model	Dimension (mm)								B.L. (kN)	Applicable with		Net Weight (kg)
	D	P	T	A	B	C	d	E		Chain	Bolt	
HC-14	14	20.5	9	115	30	84	14	12	110	1450	B-14	2 x 0.25
HC-16	16	21.5	12	124	30	92	17	14	180	1655	B-16W	2 x 0.30
HC-19	20	24	16	154	35	110	20	20	220	1864 1964	M18x80	2 x 0.85

* We can produce for other size and other material upon request.

* B.L. = Breaking Load (ton)

Conveyor Bolt&Nut

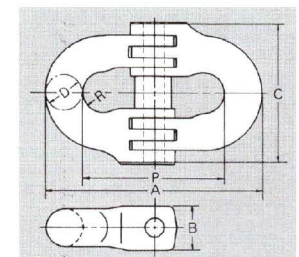
Model	Dimension (mm)								Net Weight (kg)
	A	B	D	E	G	M	N	M1	
B-10	55	20	M10	7	17	-	-	8	0.06
B-14	55	20	W1/2	9	21	10	3.5	-	0.12
B-16W	70	32	W5/8	11	26	16	4	-	0.20
B-20	85	30	M20	15	32	20	5	-	0.40
B-2094	94	30	M20	15	32	20	5	-	0.42
B-24	102	37	M24	17	36	24	5.4	-	0.56
B-27-2	110	45	M27	17	36	-	-	22	0.90



Conveyor Coupling

Model	Dimension (mm)							B.L. (kN)	Applicable with Chain	Net Weight (kg)
	D	P	A	B	C	R	Pin Holes			
SK-11	11	43	65	13	41	6.5	5.5	120	1143	0.15
SK-14	14	50	78	15	52	7.7	6.3	170	1450	0.27
SK-16	16	55	87	18	59	8.7	7.0	250	1655	0.4
SK-20	19.5	64	103	21	72	10.5	8.5	400	1964 2064	0.7
SK-22	23	85	131	26	82	12.5	11.0	500	2286	1.0
SK-30	31	108	170	34	112	17.0	15.0	930	30108	2.6

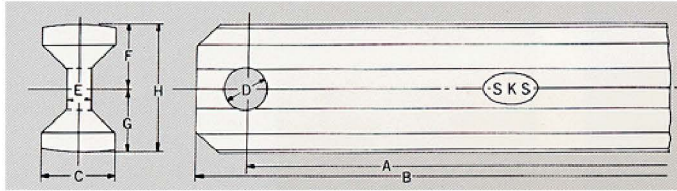
* B.L. = Breaking Load (ton)



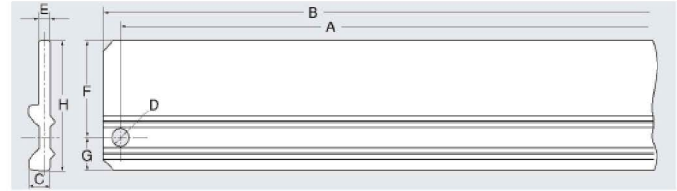
Conveyor Parts Scraper & Bucket Elevator Chain



Conveyor Scraper



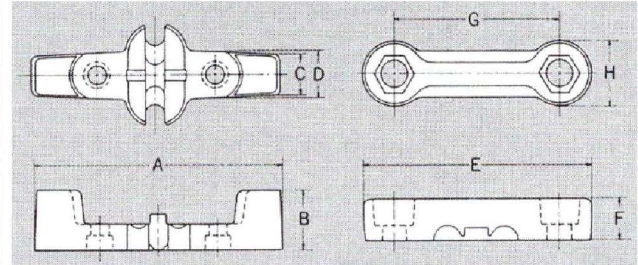
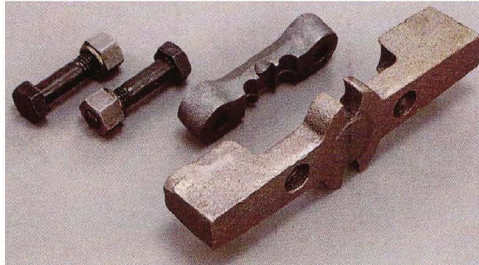
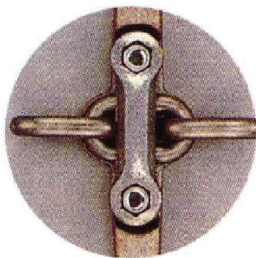
S14-26 / S16-27 / S18-FL



S18-SF

Model	Dimension (mm)								Applicable with		Net Weight (kg)
	A	B	C	D	E	F	G	H	Chain	Shackle	
S14-26	260	290	25	15	13	21.5	26.5	48	1450	C-1450	1.6
S16-27	270	306	30	18	14	23	29	52	1655	C-1655	2.0
S18-FL	Made to Order	Made to Order	36	18	12	31.5	31.5	63	1655	C-1655 CA-16 SR	11.5 per meter
				21					1964	CA-19 SR	
S18-SF	Made to Order	Made to Order	36	18	12	93.5	31.5	125	1655	C-1655 CA-16 SR	15.0 per meter
				21					1964	CA-19 SR	

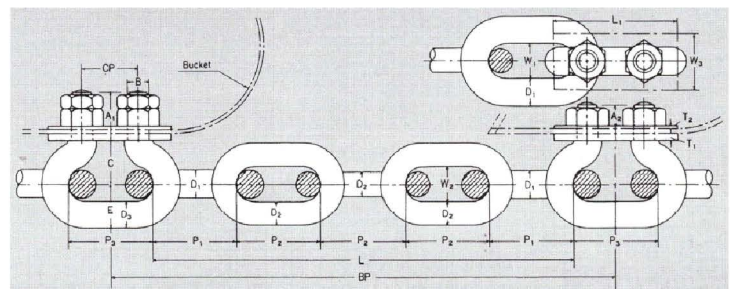
Conveyor Scraper - SC Type (Scraper can be easily fixed to any position along the chain)



Model	Dimension (mm)								Applicable with Chain	Bolt	Net Weight (kg)
	A	B	C	D	E	F	G	H			
S-14C-185	185	46	26	36	130	24	94	36	1450	M12x35 with U-nut	1.9
S-14C-235	235	46	26	36	130	24	94	36			2.2
S-14C-285	285	46	26	36	130	24	94	36			2.8

Bucket Elevator Chain

Bucket Size	Dimension (mm)						
	D ₁	P ₁	W ₁	D ₂	P ₂	W ₂	D ₃
600 / 500 / 450	22	65	28	19	65	26	22
400 / 350	19	60	26	16	60	24	19
300 / 250	16	60	24	13	60	19	16



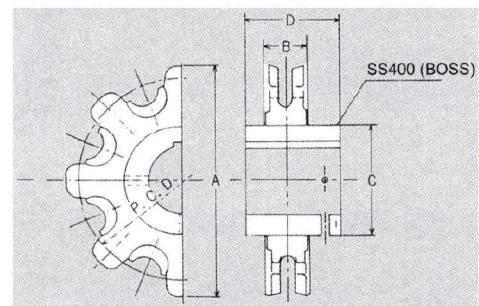
Bucket Size	Dimension (mm)							Plate
	P ₃	B	CP	A ₁	A ₂	C	E	
600 / 500 / 450	75	3/4" 7/8"	50	45 48	32 35	35	35	T ₁ , T ₂ , W ₃ , L ₁ Upon Request
400 / 350	235 65	3/4" 7/8"	50	40 45	30 32	32	32	
300 / 250	285 60	3/4" 7/8"	45	35 40	35 40	28	28	



Conveyor Parts Sprocket Wheel

Conveyor Sprocket Wheel - Machining Type

Model	Number of Pocket	P.C.D.	Dimension (mm)			Applicable with Chain
			A	B	C	
W1450M-6	6	193.7	220	52	120	H-1450
W1450M-8	8	256.6	280	52	145	H-1450
W1655M-6	6	213.1	240	62.5	130	H-1655
W1655M-8	8	282.4	320	62.5	172	H-1655
W1864M-6	6	248.0	280	70	130	H-1864
W1864M-8	8	328.6	366	70	175-200	H-1864
W1964M-8	8	328.6	366	70	200	H-1964
W1964M-10	10	409.6	445	68	240	H-1964
W2064M-6	6	248.1	280	70	130	H-2064
W2064M-8	8	328.7	366	70	175-200	H-2064
W2280M-8	8	410.7	450	82	230	H-2280
W2280M-10	10	511.9	556	82	260	H-2280

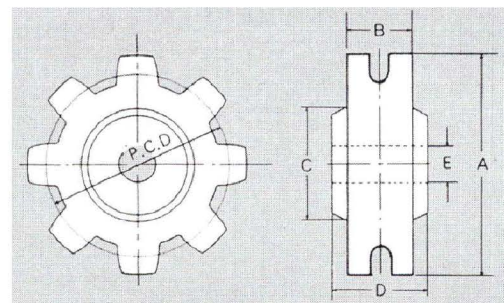


* We can produce for other size upon request.

* The D dimension can be processed to the requirement.

Conveyor Sprocket Wheel - Casting Type (material FCD-500)

Model	Number of Pocket	P.C.D.	Dimension (mm)					Applicable with Chain	Net Weight (kg)
			A	B	C	D	E		
W1143-6	6	166.5	185	39	90	66	40	H-1143	5.5
W1143-10	10	275.1	298	46	120	70	35	H-1143	15
W1450-6	6	193.7	220	56	110	86	40	H-1450	10
W1450-7	7	225.2	250	56	125	86	40	H-1450	13
W1450-8	8	256.6	280	56	150	86	40	H-1450	21
W1655-6	6	213.1	240	60	130	106	40	H-1655	16
W1655-7	7	247.7	275	60	130	86	50	H-1655	25
W1655-8	8	282.4	310	60	180	106	40	H-1655	35
W1864-6	6	248.0	280	75	140	106	50	H-1864	32
W1864-7	7	288.2	320	70	200	106	50	H-1864	36
W1864-8	8	328.6	365	70	200	106	50	H-1864	50
W1964-8	8	328.6	366	68	220	106	60	H-1964	45



* We can produce for other size upon request.